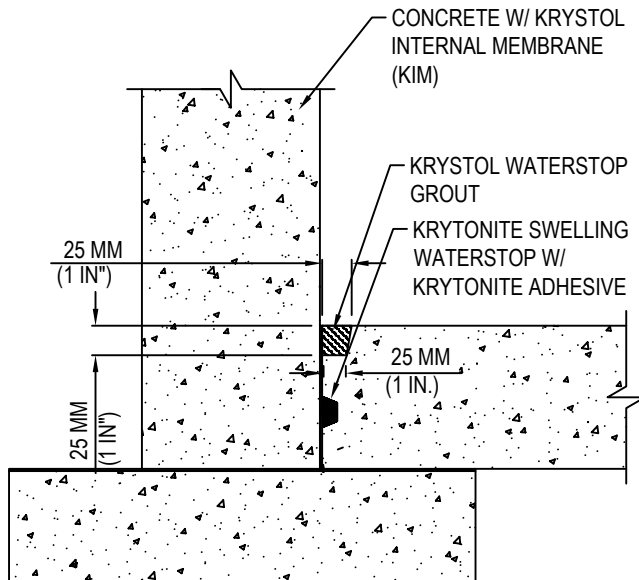


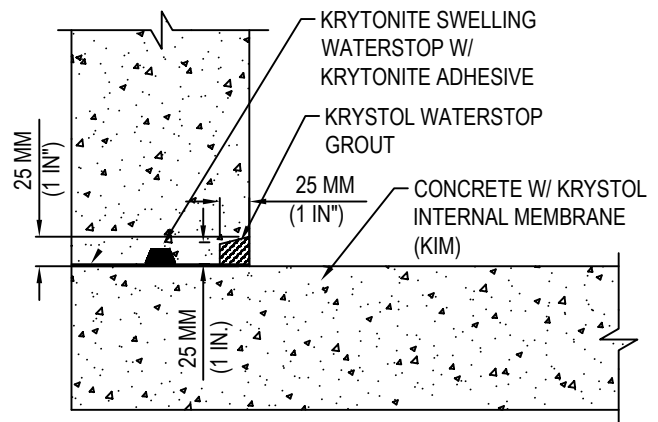


SMART CONCRETE®

Kryton Buildmat Co. Pvt. Ltd.  
136-137 Centrum Plaza, Golf  
Course Road,  
Sector 53, Gurugram, Haryana  
122002  
Telefax: +91-124-4381140 / 41  
Email: [custcare@kryton.in](mailto:custcare@kryton.in)  
Web: [www.kryton.in](http://www.kryton.in)



INBOARD



WALL ON TOP

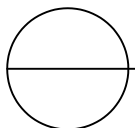
WALL TO SLAB CONSTRUCTION JOINTS  
DOUBLE PROTECTION

MANUFACTURER'S NOTES:

1. PLACE CONCRETE TREATED WITH KRYSTOL INTERNAL MEMBRANE (KIM).
2. INSTALL KRYTONITE SWELLING WATERSTOP IN CENTER OF SLAB, USING KRYTONITE ADHESIVE
3. CREATE U- SHAPE GROOVE / ROUT OUT SIZE 25MM X 25MM AT THE INTERSECTION WHERE THE TWO CONCRETE SECTIONS
4. TIGHTLY PACK U- SHAPE GROOVE / ROUT OUT SIZE 25MM X 25MM FLUSH TO THE SURFACE WITH KRYSTOL WATERSTOP GROUT

NOTES:

1. INSTALLATION TO BE COMPLETED IN ACCORDANCE WITH MANUFACTURER'S SPECIFICATIONS.
2. DO NOT SCALE DRAWING.
3. THIS DRAWING IS INTENDED FOR USE BY ARCHITECTS, ENGINEERS, CONTRACTORS, CONSULTANTS AND DESIGN PROFESSIONALS FOR PLANNING PURPOSES ONLY. THIS DRAWING MAY NOT BE USED FOR CONSTRUCTION.
4. ALL INFORMATION CONTAINED HEREIN WAS CURRENT AT THE TIME OF DEVELOPMENT BUT MUST BE REVIEWED AND APPROVED BY THE PRODUCT MANUFACTURER TO BE CONSIDERED ACCURATE.



**KRYSTOL WATERSTOP SYSTEM**

WALL TO SLAB – DOUBLE PROTECTION