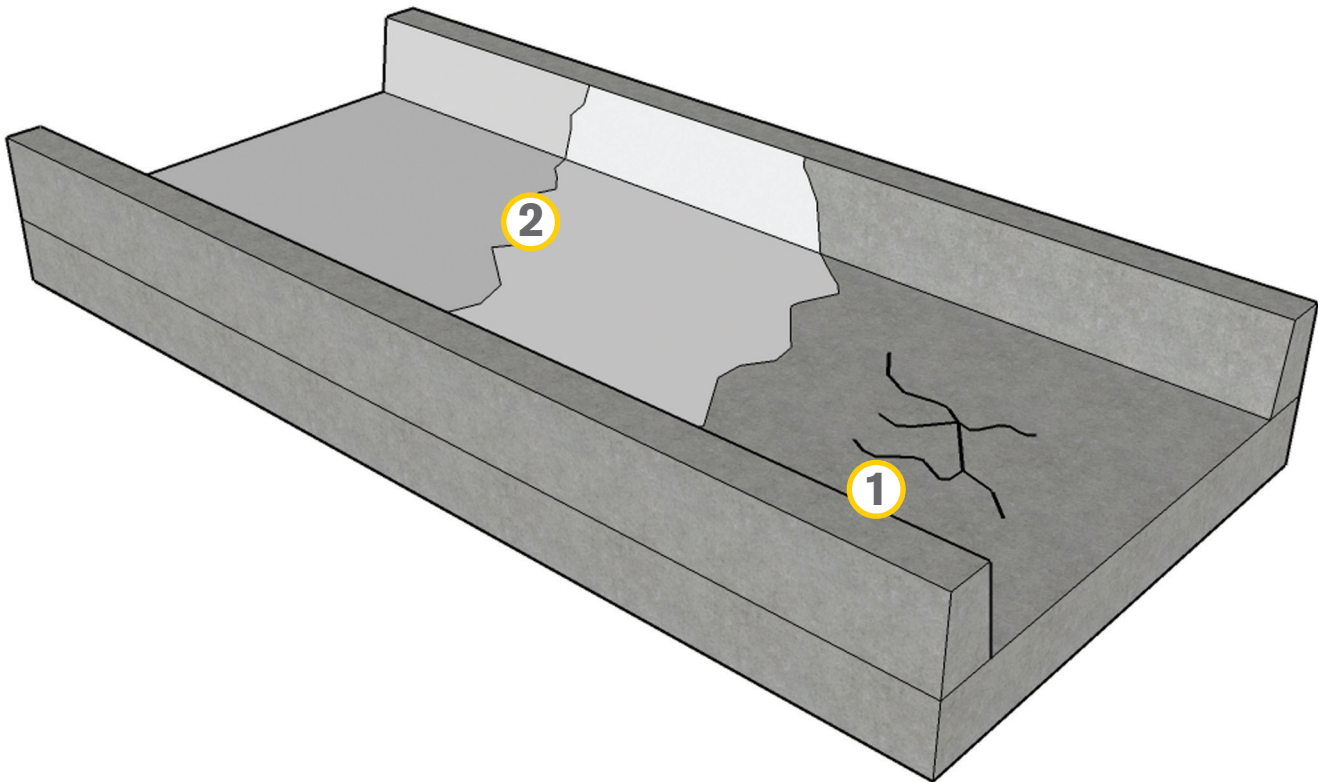


# APPLICATION OVERVIEW

## Existing Structure & Repair - Bridge Deck



### Positive Side or Top Side Waterproofing

1. Use the Krystol Crack Repair System to treat leaking cracks and joints. Refer to Application Instruction 5.12 — Waterproofing Cracks, Holes and Joints. (Note when waterproofing cracks from the top side it is not necessary to use Krystol Plug).
2. Apply Krystol T1 surface treatment to the bridge deck to protect the deck from de-icing salts. Refer to Application Instruction 2.11 — Waterproofing with Surface-Application.

### Negative Side or Under Side Waterproofing

1. Use the Krystol Crack Repair System to treat leaking cracks. Refer to Application Instruction 5.12 — Waterproofing Cracks, Holes and Joints.
2. Apply Krystol T1 and T2 surface treatment to the underside of the bridge deck to protect the deck from de-icing salts. Refer to Application Instruction 2.11 & 2.11B — Waterproofing with Surface-Application.