

EXISTING CONSTRUCTION OVERVIEW

Waterproofing Elevators / Sump Pits



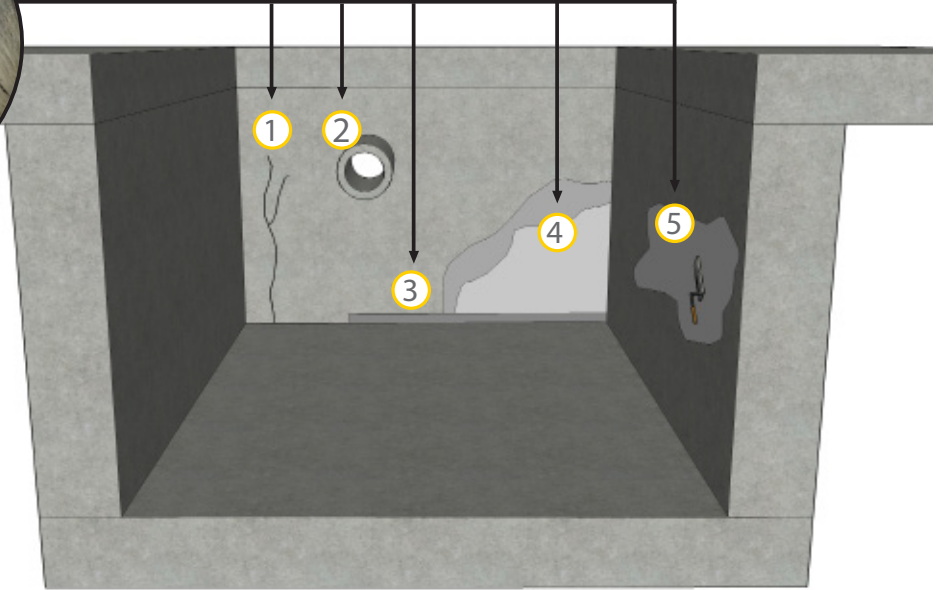
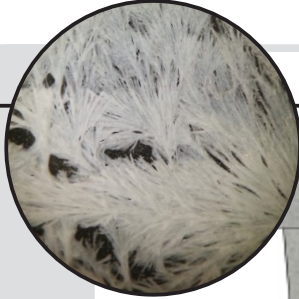
Kryton's concrete repair products are specially designed to resurface, waterproof and repair leaking cracks, joints, penetrations, tie-holes and defective concrete from the positive or negative side of water pressure. They can be used in concrete that was built yesterday, or structures needing waterproofing repair after decades of service. Kryton's concrete repair products reliably stop high water flow, even under high-hydrostatic pressure, and outperform epoxy or polyurethane injection repair systems.

Krytol[®] Technology

Kryton waterproof repair products contain Krytol technology.

When applied to concrete, Krytol chemically reacts with water and un-hydrated cement particles to form insoluble needle-shaped crystals that fill capillary pores and micro-cracks in the concrete and block the pathways for water and waterborne contaminants.

Any moisture introduced over the lifespan of the concrete will initiate crystallization, ensuring permanent waterproofing protection.



Krytol Leak Repair System

Comprised of Krytol Plug[™], Krytol Waterstop Grout[™], Krytol T1[®], Krytol T2[®] (recommended), it is primarily used to repair leaking cracks in concrete.

- 1 Waterproofing cracks, holes and joints.
- 2 Leaking pipe penetrations.
- 3 Leaking joints.

Krytol T1 & T2 Concrete Waterproofing

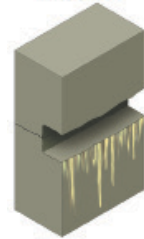
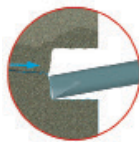
An "in-depth" concrete treatment that is applied as a slurry or spray to the surface of existing concrete structures.

- 4 Slab and walls to prevent further water ingress.

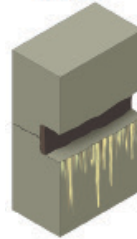
Krytol Waterstop Grout or Krytol Bari-Cote

- 5 Patching and parging defective concrete and masonry.

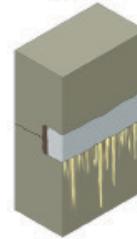
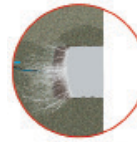
1 KRYTOL LEAK REPAIR SYSTEM



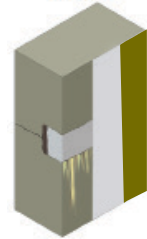
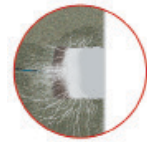
Step 1:
Prepare the
crack or joint.



Step 2:
Stop flowing water
with Krytol Plug.



Step 3:
Install Krytol
Waterstop Grout.

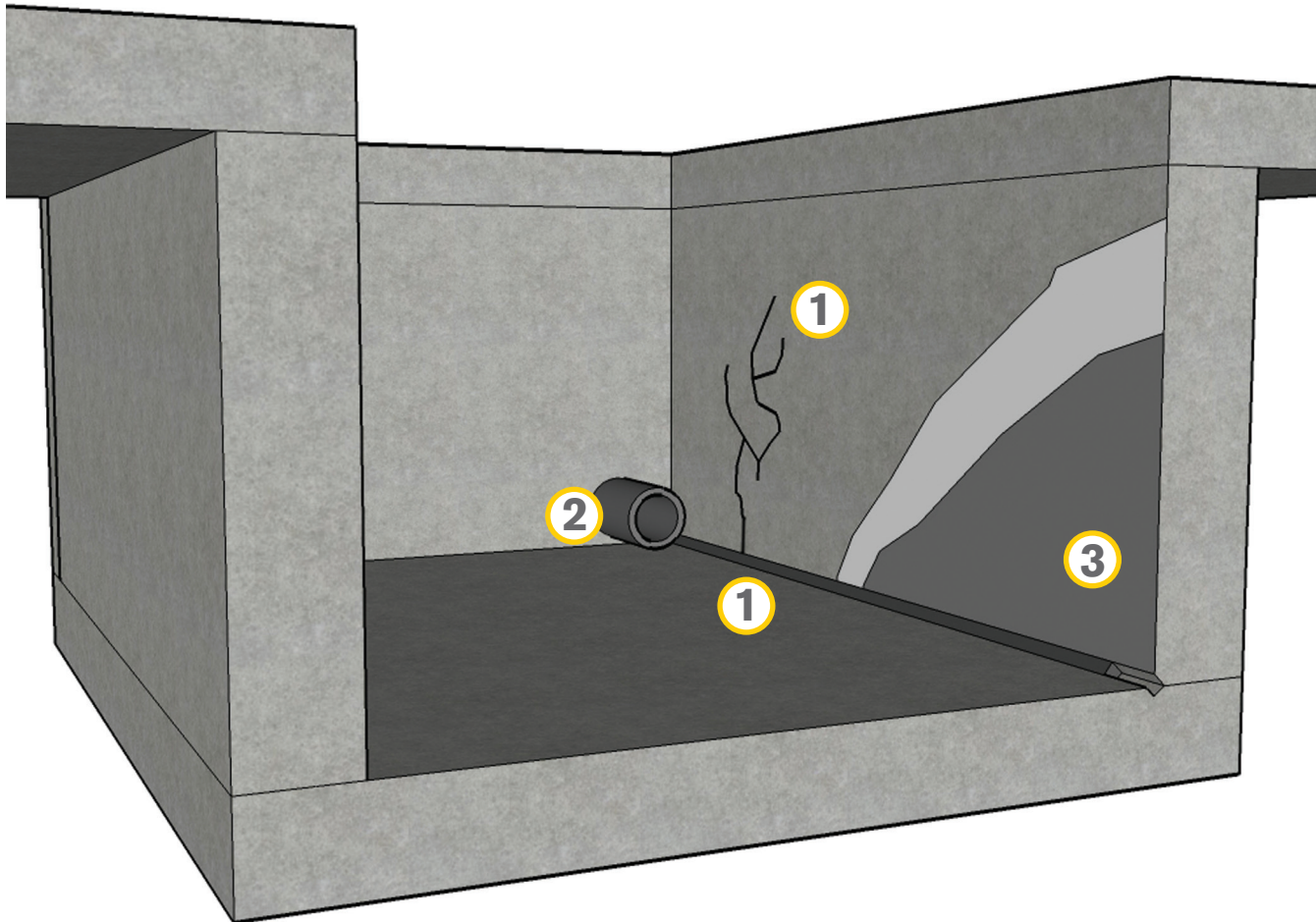


Step 4:
Apply Krytol T1 &
Krytol T2 to the
surface.

APPLICATION OVERVIEW

Existing Structure & Repair - Elevator / Sump Pit

2 of 2



Negative side waterproofing for below grade structures where there has been no waterproofing or the waterproofing membrane has failed.

1. Use the Krystol Crack Repair System to treat leaking cracks and joints. Refer to Application Instruction 5.12 — Waterproofing Cracks, Holes and Joints.
2. Use Krystol Plug, Krystol T1 and Krystol Waterstop Grout to waterproof leaking pipe penetrations. Refer to Application Instruction 5.32 — Waterproofing Pipe Penetrations (Existing Construction).
3. Apply Krystol T1 and T2 surface treatment to the slab and walls to prevent further water ingress. Refer to Application Instruction 2.11 & 2.11B — Waterproofing with Surface-Application .

V 2024-01