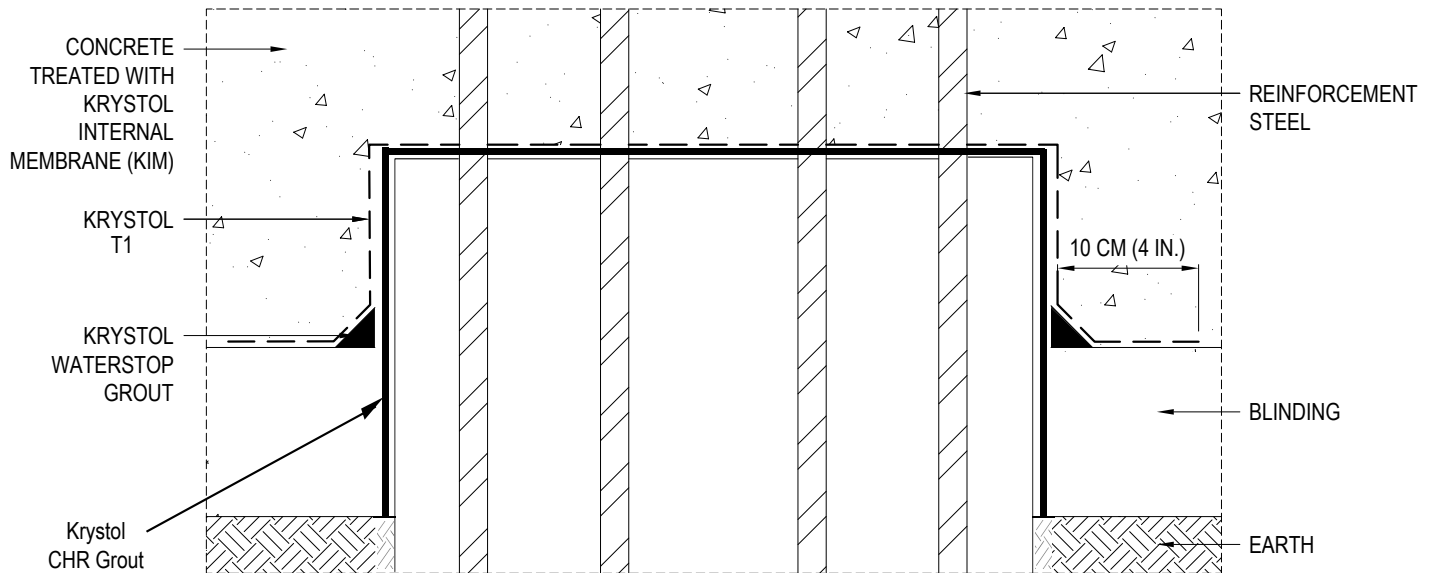




Kryton Buildmat Co. Pvt. Ltd.
136-137 Centrum Plaza, Golf
Course Road,
Sector 53, Gurugram, Haryana
122002
Telefax: +91-124-4381140 / 41
Email: custcare@kryton.in
Web: www.kryton.in



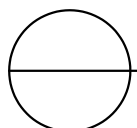
PILE CAP TREATMENT

MANUFACTURER'S NOTES:

1. PLACE CONCRETE AROUND PILING.
2. PLACE KRYSTOL WATERSTOP GROUT IN A 50 MM (2 IN.) WIDE FILLET.
3. COAT SURFACE AREA OF THE CURED KRYSTOL WATERSTOP GROUT FILLET, SURROUNDING CONCRETE, AND THE TOP AND CIRCUMFERENTIAL AREA OF PILE HEAD WITH KRYSTOL T1 TREATMENT.
4. PLACE CONCRETE TREATED WITH KRYSTOL INTERNAL MEMBRANE (KIM)

NOTES:

1. INSTALLATION TO BE COMPLETED IN ACCORDANCE WITH MANUFACTURER'S SPECIFICATIONS.
2. DO NOT SCALE DRAWING.
3. THIS DRAWING IS INTENDED FOR USE BY ARCHITECTS, ENGINEERS, CONTRACTORS, CONSULTANTS AND DESIGN PROFESSIONALS FOR PLANNING PURPOSES ONLY. THIS DRAWING MAY NOT BE USED FOR CONSTRUCTION.
4. ALL INFORMATION CONTAINED HEREIN WAS CURRENT AT THE TIME OF DEVELOPMENT BUT MUST BE REVIEWED AND APPROVED BY THE PRODUCT MANUFACTURER TO BE CONSIDERED ACCURATE.



PENETRATIONS

PILE CAP - TRIPLE PROTECTION