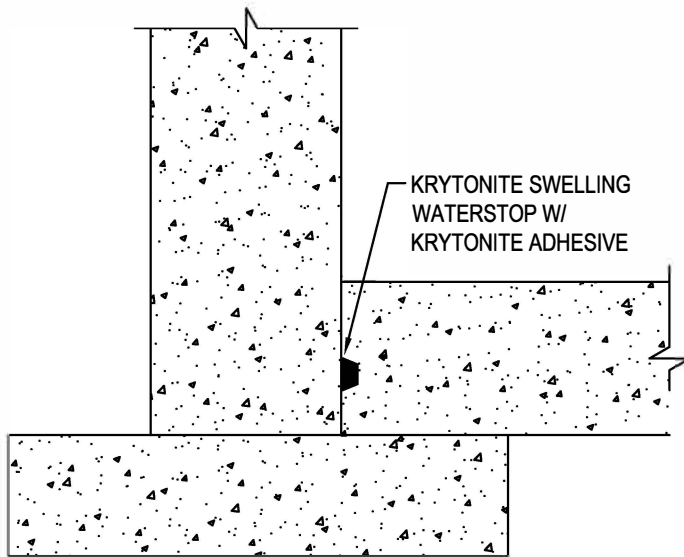
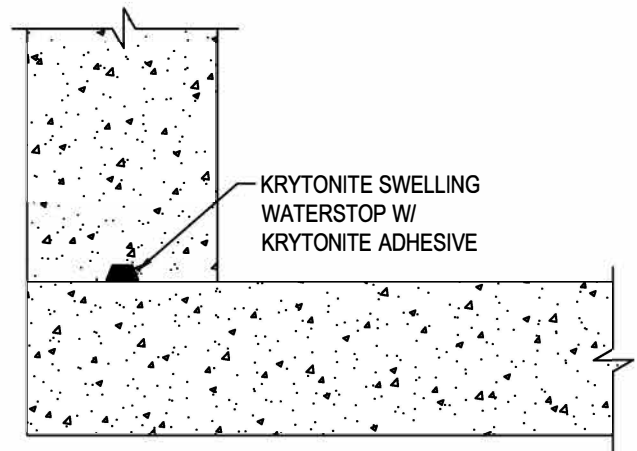




Kryton Buildmat Co. Pvt. Ltd.
136-137 Centrum Plaza, Golf
Course Road,
Sector 53, Gurugram, Haryana
122002
Telefax: +91-124-4381140 / 41
Email: custcare@kryton.in
Web: www.kryton.in



INBOARD



WALL ON TOP

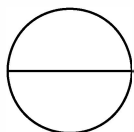
WALL TO SLAB CONSTRUCTION JOINTS
SINGLE PROTECTION

MANUFACTURER'S NOTES:

1. INSTALL KRYTONITE SWELLING WATERSTOP IN CENTER OF SLAB, USING KRYTONITE ADHESIVE

NOTES:

1. INSTALLATION TO BE COMPLETED IN ACCORDANCE WITH MANUFACTURER'S SPECIFICATIONS.
2. DO NOT SCALE DRAWING.
3. THIS DRAWING IS INTENDED FOR USE BY ARCHITECTS, ENGINEERS, CONTRACTORS, CONSULTANTS AND DESIGN PROFESSIONALS FOR PLANNING PURPOSES ONLY. THIS DRAWING MAY NOT BE USED FOR CONSTRUCTION.
4. ALL INFORMATION CONTAINED HEREIN WAS CURRENT AT THE TIME OF DEVELOPMENT BUT MUST BE REVIEWED AND APPROVED BY THE PRODUCT MANUFACTURER TO BE CONSIDERED ACCURATE.



KRYSTOL WATERSTOP SYSTEM

WALL TO SLAB – SINGLE PROTECTION