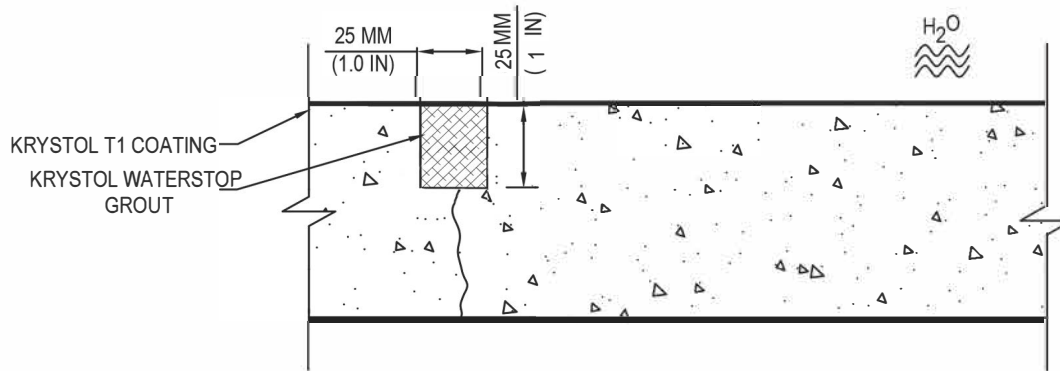


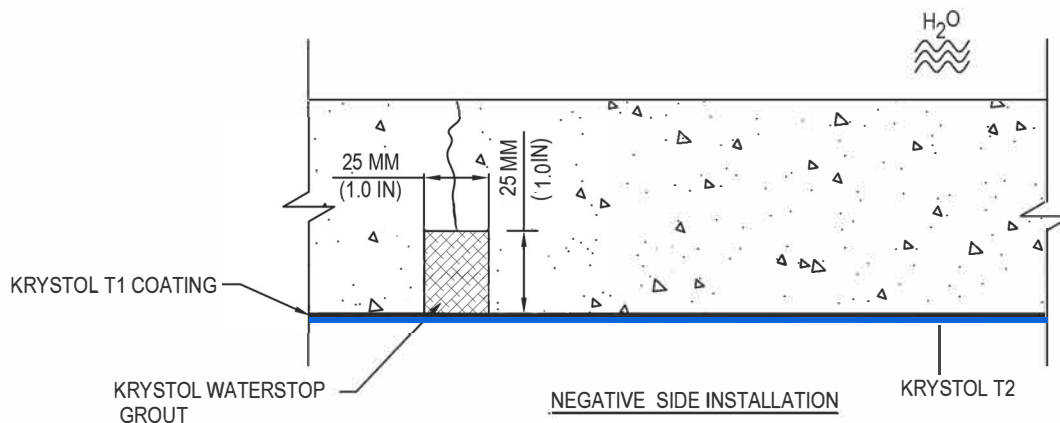


SMART CONCRETE®

Kryton Buildmat Co. Pvt. Ltd.
136-137 Centrum Plaza, Golf
Course Road,
Sector 53, Gurugram, Haryana
122002
Telefax: +91-124-4381140 / 41
Email: custcare@kryton.in
Web: www.kryton.in



POSITIVE SIDE INSTALLATION



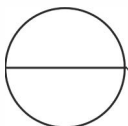
NEGATIVE SIDE INSTALLATION

MANUFACTURER'S NOTES:

1. SAW CUT AND OR CHISEL ANY CRACKS OVER 0.5 MM IN U SHAPE TO THE REQUIRED DEPTH OF 25 MM X 25 MM (1" X 1")
2. TIGHTLY PACK, FLUSH TO THE SURFACE WITH KRYSTOL WATERSTOP GROUT
3. POSITIVE SIDE - WATERPROOF ENTIRE WALL OR SLAB WITH KRYSTOL T1.
4. NEGATIVE SIDE - ADDITIONAL COAT AFTER 3 TO 4 HOURS WITH KRYSTOL T2.

NOTES:

1. INSTALLATION TO BE COMPLETED IN ACCORDANCE WITH MANUFACTURER'S SPECIFICATIONS.
2. DO NOT SCALE DRAWING.
3. THIS DRAWING IS INTENDED FOR USE BY ARCHITECTS, ENGINEERS, CONTRACTORS, CONSULTANTS AND DESIGN PROFESSIONALS FOR PLANNING PURPOSES ONLY. THIS DRAWING MAY NOT BE USED FOR CONSTRUCTION.
4. ALL INFORMATION CONTAINED HEREIN WAS CURRENT AT THE TIME OF DEVELOPMENT BUT MUST BE REVIEWED AND APPROVED BY THE PRODUCT MANUFACTURER TO BE CONSIDERED ACCURATE.



KRYSTOL T1 SURFACE APPLIED CRYSTALLINE WATERPROOFING

HORIZONTAL SURFACES