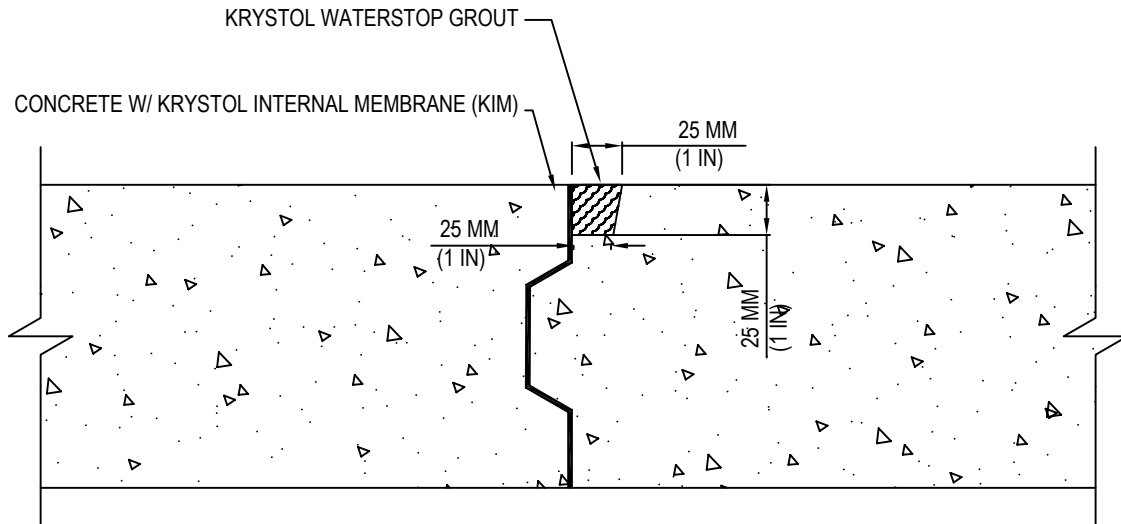




Kryton Buildmat Co. Pvt. Ltd.  
136-137 Centrum Plaza, Golf  
Course Road,  
Sector 53, Gurugram, Haryana  
122002  
Telefax: +91-124-4381140 / 41  
Email: [custcare@kryton.in](mailto:custcare@kryton.in)  
Web: [www.kryton.in](http://www.kryton.in)



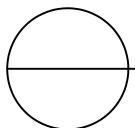
SLAB TO SLAB CONSTRUCTION JOINTS  
DOUBLE PROTECTION; EXTERNAL METHOD

MANUFACTURER'S NOTES:

1. PLACE CONCRETE TREATED WITH KRYSTOL INTERNAL MEMBRANE (KIM).
2. CREATE U- SHAPE GROOVE / ROUT OUT SIZE 25MM X 25MM AT THE INTERSECTION WHERE THE TWO CONCRETE SECTIONS
3. TIGHTLY PACK U- SHAPE GROOVE / ROUT OUT SIZE 25MM X 25MM FLUSH TO THE SURFACE WITH KRYSTOL WATERSTOP GROUT)

NOTES:

1. INSTALLATION TO BE COMPLETED IN ACCORDANCE WITH MANUFACTURER'S SPECIFICATIONS.
2. DO NOT SCALE DRAWING.
3. THIS DRAWING IS INTENDED FOR USE BY ARCHITECTS, ENGINEERS, CONTRACTORS, CONSULTANTS AND DESIGN PROFESSIONALS FOR PLANNING PURPOSES ONLY. THIS DRAWING MAY NOT BE USED FOR CONSTRUCTION.
4. ALL INFORMATION CONTAINED HEREIN WAS CURRENT AT THE TIME OF DEVELOPMENT BUT MUST BE REVIEWED AND APPROVED BY THE PRODUCT MANUFACTURER TO BE CONSIDERED ACCURATE.



## KRYSTOL WATERSTOP SYSTEM

SLAB TO SLAB – DOUBLE PROTECTION – EXT GROUT METHOD