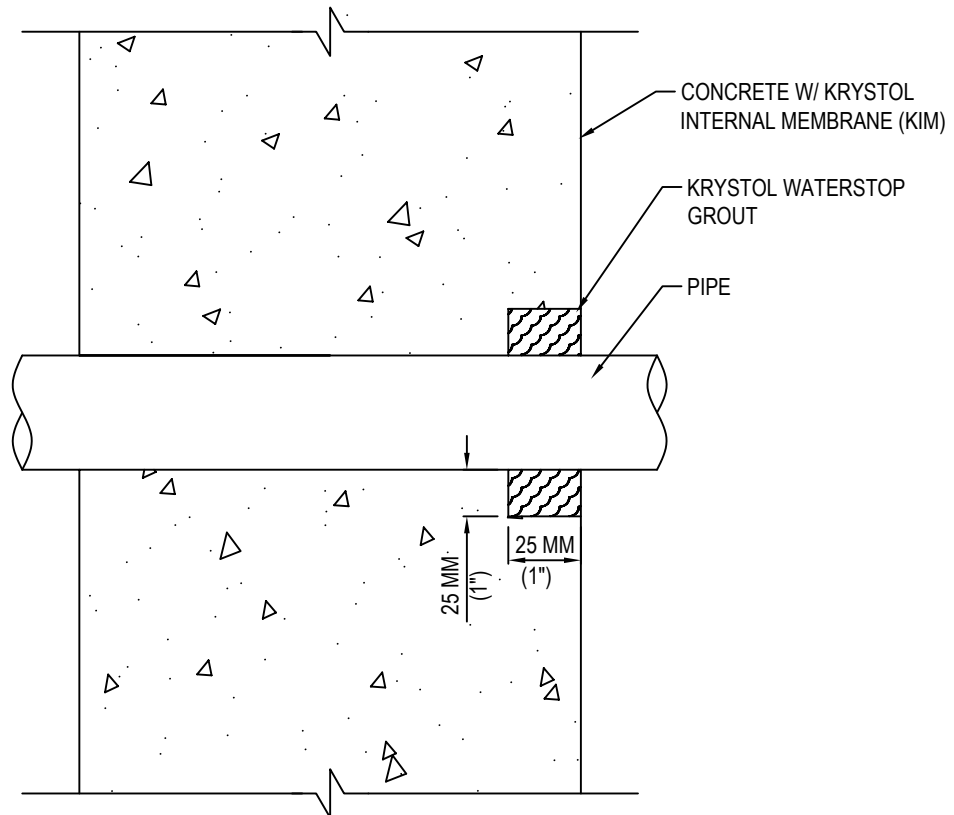




SMART CONCRETE®

Kryton Buildmat Co. Pvt. Ltd.
136-137 Centrum Plaza, Golf
Course Road,
Sector 53, Gurugram, Haryana
122002
Telefax: +91-124-4381140 / 41
Email: custcare@kryton.in
Web: www.kryton.in



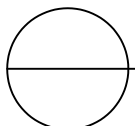
PIPE PENETRATIONS
EXTERNAL GROUT METHOD

MANUFACTURER'S NOTES:

1. PLACE CONCRETE TREATED WITH KRYSTOL INTERNAL MEMBRANE (KIM).
2. FORM A 25MM X 25MM (1" X 1") CHASE AROUND THE PIPE PENETRATION
3. TIGHTLY PACK PREFORMED KEYWAY FLUSH TO THE SURFACE WITH KRYSTOL WATERSTOP GROUT

NOTES:

1. INSTALLATION TO BE COMPLETED IN ACCORDANCE WITH MANUFACTURER'S SPECIFICATIONS.
2. DO NOT SCALE DRAWING.
3. THIS DRAWING IS INTENDED FOR USE BY ARCHITECTS, ENGINEERS, CONTRACTORS, CONSULTANTS AND DESIGN PROFESSIONALS FOR PLANNING PURPOSES ONLY. THIS DRAWING MAY NOT BE USED FOR CONSTRUCTION.
4. ALL INFORMATION CONTAINED HEREIN WAS CURRENT AT THE TIME OF DEVELOPMENT BUT MUST BE REVIEWED AND APPROVED BY THE PRODUCT MANUFACTURER TO BE CONSIDERED ACCURATE.



KRYSTOL WATERSTOP SYSTEM (KWS)

PIPE PENETRATION - EXT GROUT METHOD