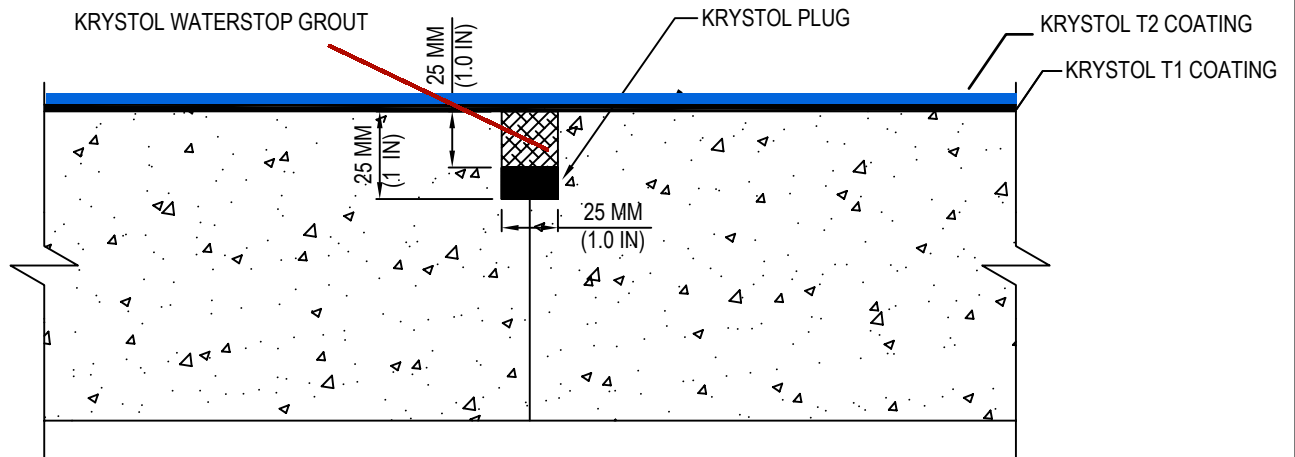




Kryton Buildmat Co. Pvt. Ltd.
136-137 Centrum Plaza, Golf
Course Road,
Sector 53, Gurugram, Haryana
122002
Telefax: +91-124-4381140 / 41
Email: custcare@kryton.in
Web: www.kryton.in



SLAB TO SLAB/WALL TO WALL JOINT LEAK REPAIR

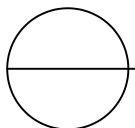
MANUFACTURER'S NOTES:

CHISEL TO CREATE A CHASE ALONG THE ENTIRE LENGTH OF THE LEAKING CRACK OR JOINT TO THE REQUIRED 25 MM X 25 MM (1" X 1")

1. APPLY KRYSTOL PLUG TO PREPARED CHASE TO STOP FLOWING WATER.
2. TIGHTLY PACK REMAINING CHASE WITH KRYSTOL WATERSTOP GROUT.
3. WATERPROOF ENTIRE WALL OR SLAB WITH KRYSTOL T1.
4. ONE COAT OF KRYSTOL T2 AFTER 3 TO 4 HOURS

NOTES:

1. INSTALLATION TO BE COMPLETED IN ACCORDANCE WITH MANUFACTURER'S SPECIFICATIONS.
2. DO NOT SCALE DRAWING.
3. THIS DRAWING IS INTENDED FOR USE BY ARCHITECTS, ENGINEERS, CONTRACTORS, CONSULTANTS AND DESIGN PROFESSIONALS FOR PLANNING PURPOSES ONLY. THIS DRAWING MAY NOT BE USED FOR CONSTRUCTION.
4. ALL INFORMATION CONTAINED HEREIN WAS CURRENT AT THE TIME OF DEVELOPMENT BUT MUST BE REVIEWED AND APPROVED BY THE PRODUCT MANUFACTURER TO BE CONSIDERED ACCURATE.



KRYSTOL LEAK REPAIR SYSTEM

SLAB TO SLAB – LEAK REPAIR