

NEW CONSTRUCTION OVERVIEW

Waterproofing Elevators / Sump Pits

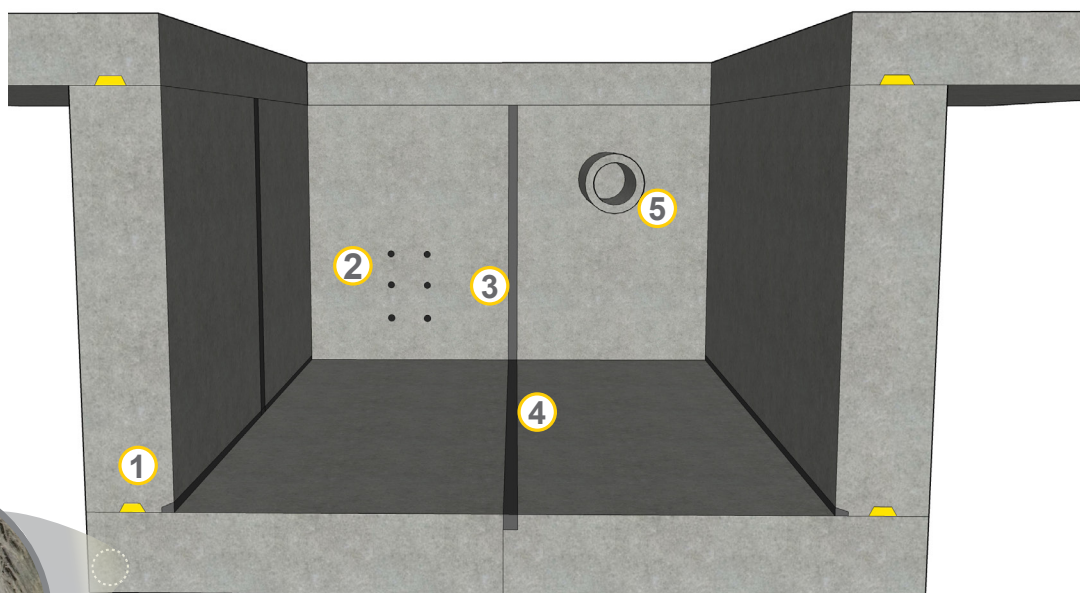


Kryton's **Krystol Internal Membrane™ (KIM®)** Waterproofing System covers every construction detail to create watertight concrete structures that replace the need for traditional surface applied membranes. It is more reliable, lasts longer and saves time over other waterproofing systems. This not only saves money during initial construction but also reduces long term repair and maintenance costs.

Krystol Internal Membrane (KIM)

Add to the concrete mix to turn the concrete itself into a permanent waterproofing membrane.

KIM stops water by lowering the permeability of the concrete. Through its unmatched ability to self-seal micro cracks and stop water under the most severe hydrostatic pressure, KIM is the most effective concrete waterproofing solution available.



Krystol® chemically reacts with water and un-hydrated cement particles to form insoluble needle-shaped crystals that fill capillary pores and micro-cracks in the concrete and block the pathways for water and waterborne contaminants. Any moisture introduced over the lifespan of the concrete will initiate crystallization, ensuring permanent waterproofing protection.

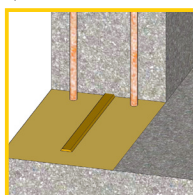
Krystol Waterstop System (KWS)

Use to permanently waterproof every concrete detail including Construction Joints, Penetrations, Tie Holes and Control Joints.

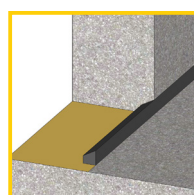
- ① Wall to slab Construction Joints
- ② Tie Holes
- ③ Wall on wall Construction Joints
- ④ Slab to slab Construction Joints
- ⑤ Penetrations

① WALL TO SLAB CONSTRUCTION JOINTS

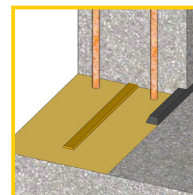
SINGLE PROTECTION



Internal Swelling Method

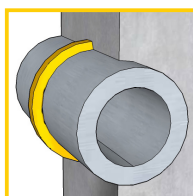


External Grout Method

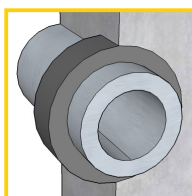


DOUBLE PROTECTION

⑤ PENETRATIONS



Internal Swelling Method

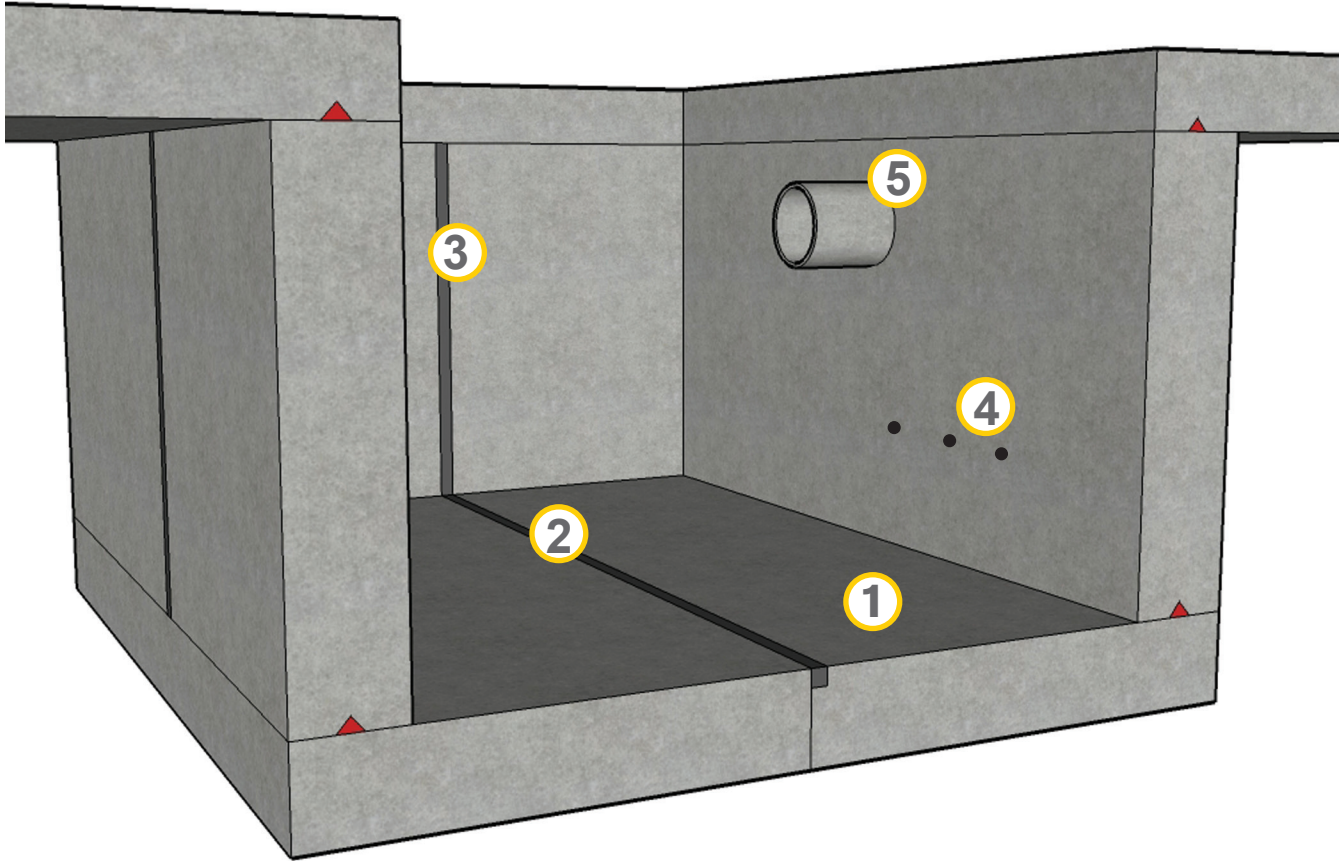


External Grout Method

APPLICATION OVERVIEW

New Construction - Elevator / Sump Pit

2 of 2



1. Add Krystol Internal Membrane (KIM) to the concrete mix to protect the slab and walls from water ingress and other contaminants. Refer to Application Instruction 1.11 — Use of KIM Admixture.
2. Use the Krystol Waterstop Grout (External) to waterproof construction joints in the slabs. Refer to Application Instruction 4.12 — Waterproofing Horizontal & Vertical Construction Joints (External Method).
3. Use the Krystol Waterstop Grout (External) to waterproof vertical construction joints in the walls. Refer to Application Instruction 4.12 — Waterproofing Horizontal & Vertical Construction Joints (External Method).
4. Use Krystol Waterstop Grout to waterproof tie holes. Refer to Application Instruction 5.12 — Waterproofing Tie Holes and Refer to Application Instruction 5.22 — Defective Concrete.
5. Use Krystol Waterstop Grout to waterproof pipe penetrations. Refer to Application Instruction 5.32 — Waterproofing Pipe Penetrations (New Construction).

V. 2024-01