

■ Krystol Mortar Admixture™ (KMA)

Krystol Mortar Admixture (KMA) is a chemical admixture in dry powdered form which is specifically formulated to provide long-term protection in rendering/plastering mortar, masonry mortar and concrete masonry units. KMA can often be used in place of externally applied surface sealers to protect against water and waterborne contaminants and can be easily incorporated into the existing mix design and application processes.

Benefits

- Enhances durability resisting salt attacks, corrosion of embedded steel and water penetration
- Minimizes the chance of debonding
- Preserves aesthetics by resisting stains and discoloration caused by efflorescence, mold and mildew, and rust
- Enhances workability for ease of use, improved adhesion and reduced cracking
- Has exceptional strength
- Self-seal minor cracking
- Withstands water under pressure such as wind-driven rain

■ Krystol Bari-Cote™

Krystol Bari-Cote is a high-strength waterproof grout that is specially designed to repair leaking cracks, holes and joints. It is specially formulated with Kryton's proven Krystol technology which combines chemically with water and concrete to form millions of needle-shaped crystals. These crystals grow in all directions to fill any capillary pores of the grout and surrounding concrete to block the passage of water.

Benefits

- High early strength
- Superior bonding ability
- Very high compressive and flexural strength
- Withstands hydrostatic pressure
- Contains no corrosive chemicals or metals
- Safe for Contact with potable water
- Can be painted after curing

■ Krystol Plug™

Krystol Plug is a fast setting powder that, when mixed to a stiff-dough consistency with water, may be used to immediately arrest the seepage or flow of water through concrete voids. Kryton Plug is used to immediately stop flowing water, allowing waterproofing repair to be installed in leaking cracks, holes, joints or any place where water is penetrating a concrete structure.

Benefits

- Stop flowing water immediately
- Sets fast, in one to two minutes
- Easy to mix and apply
- Will set up and harden under water
- Has exceptional strength
- Does not contain any Chlorides

Registered Office:

433 Ansal Chambers II, Bhikaji Cama Place,
New Delhi 110066

Head Office:

136 - 137, Centrum Plaza, Golf Course Road,
Sector 53, Gurgaon 122002
☎ +91 124 4381140/41

Factory:

Dharuhera, Haryana

Contact:

sales@kryton.in
info@kryton.in

Website:

www.kryton.in



BE SURE. BE KRYTON.



TAKE THE RISK OUT OF
CONCRETE WATERPROOFING



BE SURE. BE KRYTON.

ABOUT KRYTON BUILDMAT

For two decades Kryton Buildmat Co. Pvt. Ltd. (part of Kryton-International) has specialized in making concrete structures across India waterproof. We are the pioneers in crystallization technology, and have worked towards giving complete, customized waterproofing solutions to Architects, Engineers, Builders and Owners. Our drive to always be in the forefront of technology and innovation has led us to create a superior range of products for both new and existing concrete structures.

We pride ourselves in state-of-the-art technology, high standards in manufacturing and consistently delivering high quality products combined with an expert technical team. Our commitment to quality is ensured through the **ISO Certification** and yearly qualification/audits. This has led us to be the **ONLY** crystalline waterproofing manufacturer to carry the **BIS Hallmark (ISI License)**. Our products are recommended and approved by the Central Public Works Department (CPWD), Engineer's India Limited (EIL), Municipal Corporation of Delhi (MCD), Delhi Metro Railway Corporation (DMRC) etc. and many leading Government and Private consultants & builders.

Our parent Company is a multi-award winning construction chemical specialist that has introduced many a first in the industry. Kryton is a worldwide leader in the manufacturing and distribution of crystalline concrete waterproofing systems for over 40 years and their products are distributed in more than 50 countries worldwide.

Our Production

We are the pioneers in crystalline waterproofing manufacturing in India and the first one's to produce BIS certified Crystalline waterproofing admix (KIM®) in India. We believe in contributing to the Indian economy by purchasing local materials which are then blended with our imported base mix.

Our hi-tech production unit in Dharuhera, Haryana helps us customise packaging & delivery and helps provide complete solutions to our clients according to the site requirements. It also enables us to provide small and large orders anywhere within India in 2-3 weeks, helping construction stay on time. From India we have also successfully supplied products to other countries of the Indian Sub-continent such as Sri Lanka, Nepal etc. The testing, production and packaging has been the backbone of our promise of quality and make sure that we deliver high caliber products consistently. The fully equipped lab located at our factory premises guarantees Quality Check for every bag or pail leaving the factory. The lab also allows us to conduct research and innovate on our products year on year.



Microscopic, needle-like crystals fill the naturally occurring pores and capillary tracts of concrete for guaranteed waterproof structures.



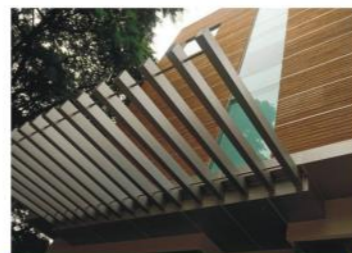
Kryton-India factory, Dharuhera, Haryana.



Civil Services Apartments, New Delhi



Delhi Metro, DMRC, New Delhi



Bodhi Towers, Pune, Maharashtra



BPCL Refinery, Bina, Madhya Pradesh



*The images are for representation only and the packaging may differ.

Our Products

■ Krystol Internal Membrane™ (KIM®)

Krystol Internal Membrane (KIM) is one of the most respected crystalline waterproofing admixture in the World. Added to the concrete during mixing it becomes an integral part of the concrete and forms a permanent internal barrier against water ingress. This system is far superior than elastomeric or PVC membrane systems at a fraction of the cost.

When combined with water, KIM's proprietary chemicals react to form millions of needle-like crystals. These crystals grow and self seal the capillary pores and micro-cracks (of up to 0.5mm) in the concrete, blocking the flow of water. As time passes and stresses form new cracks, any incoming moisture causes the crystals to reactivate – ensuring continuous waterproofing over the years.

Benefits

- Lowers the cost of waterproofing by as much as 40%
- Effective against hydrostatic pressure up to 140 m (460 ft.) of head pressure
- Helps to shave weeks off of construction schedules and reduces the cost of maintenance and repairs
- The only PRAH as defined by ACI
- Increases revenues due to decrease in material cost and reduction in construction build time
- Safe for contact with potable water and Certified by NSF to NSF/ANSI Standard 61 Drinking Water System Components – Health Effects

■ Krystol® T1/T2 System

The Krystol T1 & T2 system is a unique concrete waterproofing treatment that is an extremely cost-effective, permanent and reliable alternative to traditional membrane-based waterproofing systems for the prevention, repair and maintenance of existing concrete structures. It is surface applied to existing structures (could be on negative or positive side) to repair leaking concrete and eliminate future leaking through micro cracks & pores becoming an integral part of the concrete. It is by far the only system of its kind available in India and has been proven to work when other systems have failed.

Benefits

- Replaces unreliable exterior membranes, liners and coatings
- Reaches well below the surface and is not affected by surface wear or abrasion
- Self-seals hairline cracks up to 0.5 mm (0.02 in.)
- Reactivates in the presence of moisture
- Waterproofing increases with time
- Waterproofs from any direction (i.e. positive or negative side)
- Treatment may be applied to old or new concrete

■ Roof-Gardi

Roof-Gardi is a polymer-based, single-component elastomeric roof mastic. **Roof-Gardi** solidifies through evaporation of water and the uniting of binders. It resists the spreading of flame, weather deterioration and most chemical attacks. It is ideally suited for roofs of extreme curvature and surfaces penetrated by many openings like roofs, podiums and landscapes etc.

Benefits

- Resists cracking through excellent low temperature flexibility
- Resists dirt pick up thereby maintaining reflectivity
- Light colour - decreases interior temperature, resists impact from hail stones and abrasion from foot traffic
- Non-polluting, low toxicity
- Good chemical and solvent resistance
- Liquid applied, conforms to irregularities
- Low labour application costs
- Fire resistant